



# Data Replication

## Setup Notes for Replicating with TmaxSoft Tibero

Version 9.6.1.8

Software Release Date: 12/11/2019

## Document History

Version	Author	Date	Reviewer	Date	Comments
1	JHLorenzin	6/6/18	VFarruggio	6/7/18	
2	JHLorenzin	2/5/20	VFarruggio		

# Syniti Data Replication

## Table of Contents

Connection Type .....	3
Add a Source Connection Wizard .....	3
Select Provider Screen .....	3
Set Connection String Screen .....	3
Add a Target Connection Wizard .....	4
Select Provider Screen .....	4
Set Connection String Screen .....	5

# Syniti Data Replication

These notes provide essential information for setting up replications using **TmaxSoft Tibero** as:

- A source database for Refresh (snapshot) replications
- A target for Mirroring (change data capture)
- A target for Refresh replications

For complete details on the setup process, check the *User Guide* available from the Management Center **Help** menu or the *Setup Guide*, available for download in the [Help Center](#).

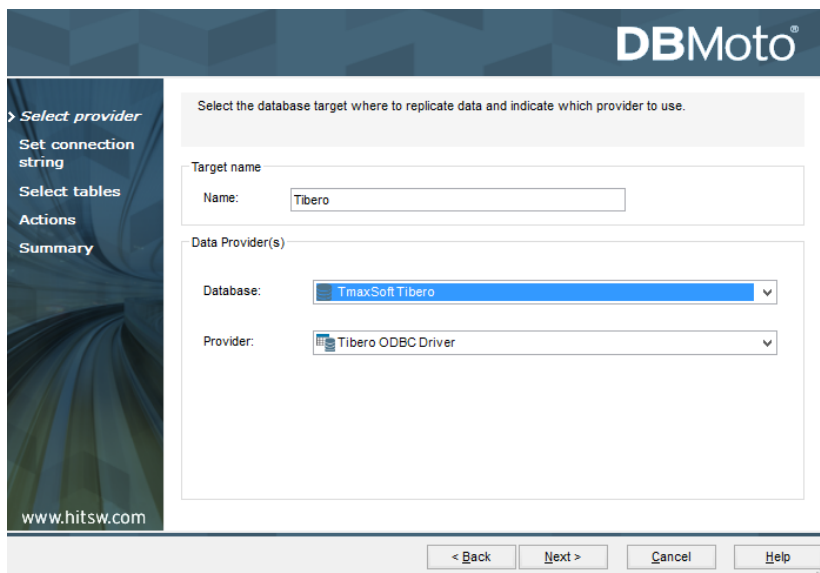
## Connection Type

TmaxSoft Tibero ODBC driver available for download from the TmaxSoft web site.

## Add a Source Connection Wizard

For Refresh replications from a Tibero source database, configure a source connection to Tibero in the Management Center using the information below. More information on the steps to configure a connection can be found in the User Guide (available from the Management Center) or the Setup Guide available for download in the [Help Center](#).

### Select Provider Screen



Select TmaxSoft Tibero in the **Database** field.  
The **Provider** field automatically shows Tibero ODBC Driver.

### Set Connection String Screen

Type an ODBC connection string in the field next to **Connection String** using the format in the sample connection strings below.

# Syniti Data Replication

For an existing ODBC DSN:

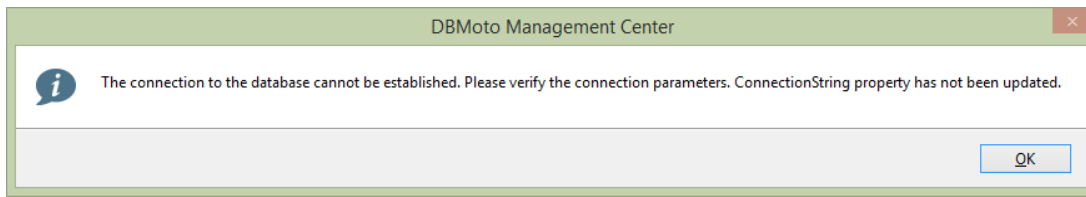
```
DSN=DSN_NAME;TYPE=ODBC;
```

For a string with all connection details:

```
Driver={Tibero 6 ODBC Driver};SERVER=100.111.1.22;PORT=8629;UID=SYS;PWD=*****;DB=tibero;
```

Be sure to add “TYPE=ODBC”. This prevents certain operations (such as SELECT FROM or CREATE TABLE) from randomly generating the following error: *Arithmetic operation resulted in an overflow.*

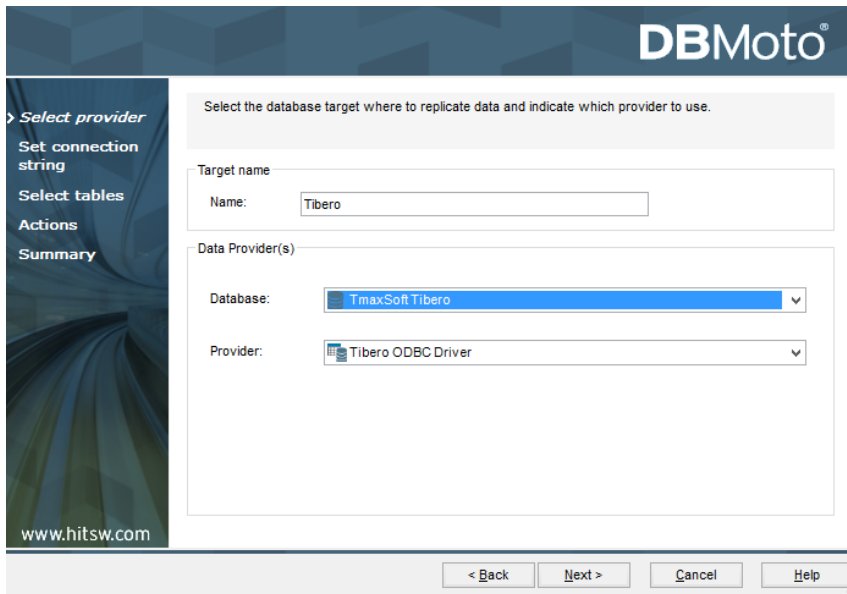
NOTE: Clicking ... in the Connection String field generates a known error. The button should open the standard ODBC configuration dialog prompt but this option is not supported with the Tibero driver, therefore the string can only be typed in manually.



## Add a Target Connection Wizard

For Refresh or Mirroring replications to a Tibero target database, configure a target connection to Tibero in the Management Center using the information below. More information on the steps to configure a connection can be found in the User Guide (available from the Management Center) or the Setup Guide available for download in the [Help Center](#).

### Select Provider Screen



Select TmaxSoft Tibero in the **Database** field.  
The **Provider** field automatically shows Tibero ODBC Driver.

# Syniti Data Replication

## Set Connection String Screen

Type an ODBC connection string in the field next to **Connection String** using the format in the sample connection strings below.

For an existing ODBC DSN:

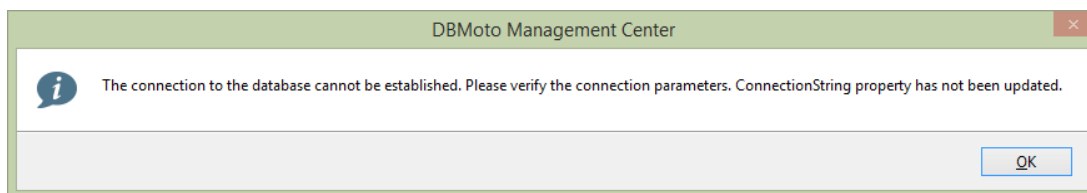
```
DSN=DSN_NAME;TYPE=ODBC;
```

For a string with all connection details:

```
Driver={Tibero 6 ODBC Driver};SERVER=100.111.1.22;PORT=8629;UID=SYS;PWD=*****;DB=tibero;
```

Be sure to add "TYPE=ODBC". This prevents certain operations (such as SELECT FROM or CREATE TABLE) from randomly generating the following error: *Arithmetic operation resulted in an overflow.*

NOTE: Clicking ... in the Connection String field generates a known error. The button should open the standard ODBC configuration dialog prompt but this option is not supported with the Tibero driver, therefore the string can only be typed in manually.



Last Updated on 2/5/20